

BUSES  
**GAZelle NEXT**





## STATE-OF-THE-ART TECHNOLOGY

Today, GAZ Auto Plant is a high-tech highly automated company ranking among Europe's leading manufacturers of commercial vehicles. GAZ exports its products to more than 40 countries worldwide and relies on best international practices in R&D, production engineering, logistics and sales.

### ENGINEERING

End-to-end product engineering process including concept design, product planning, prototyping, simulation, testing, manufacturing engineering and certification

### PRODUCTION

- Advanced production facilities; welding, painting and assembly operations; production of automotive parts.
- Assembly operations in Turkey and Kazakhstan
- Cutting-edge production equipment supplied by leading international manufacturers; high-performance flexible production equipment
- Partnership with leading OEMs



## GAZelle NEXT

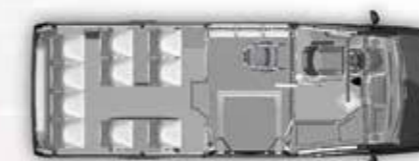
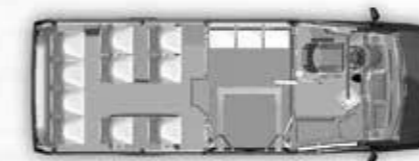
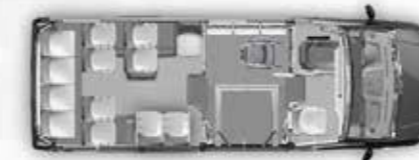
Functional, technologically advanced, reliable, robust and affordable, GAZ vehicles have earned much-deserved popularity among many businesses, utility companies and social organizations.

Vehicle structures with simple and dependable technical solutions offer long service life, fault-free operation and good serviceability. GAZ vehicles are built to withstand severe road conditions at constant maximum load and are adapted to a wide variety of weather factors.

# GAZelle NEXT BUS

This low-floor bus with spacious passenger compartment is built to provide maximum comfort for travelers.

Designed to carry 22 passengers the bus is available in several versions with different seat arrangements.



SPECIFICATIONS			
Passenger transportation options	Sitting	Standing	Disabled
	17	5	-
	14	5	1
	13	9	-
	10	9	1
	20	2	-
Gross weight, kg	4950		
Curb weight, kg	3454		
Configuration	Semi-bonnet		
Engine	Diesel		
Emission standard	Euro 5		
Max net torque, N·m	320		
Max net power, kW (hp)	102.7 (139.7)		
Gearbox	5-speed, manual		



Thanks to rear air suspension it offers exceptionally smooth ride while electric double-paneled sliding plug doors and a boarding ramp make it easier for disabled passengers to board the bus.

\* The vehicle model to be launched in IV quarter of 2020.

## MORE THAN JUST A BUS

The new GAZelle NEXT bus is a versatile modern platform that serves as a basis for models tailored to particular transportation needs, including city bus, shuttle bus and school bus.

GAZ vehicles stand out for their high residual value owing to uncompromising quality, reliability, state-of-the-art technology and cooperation with leading global suppliers.

The galvanized body is guaranteed to remain free from deep corrosion for 8 years while affordable prices of spare parts and service result in a much lower cost of ownership.

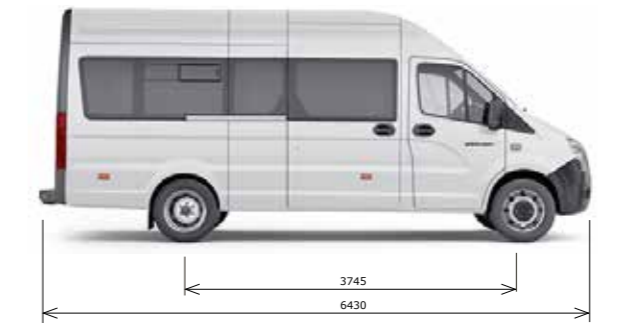
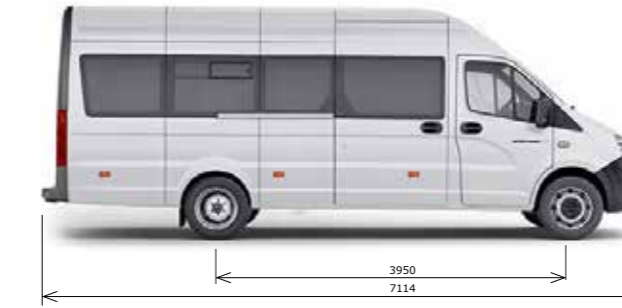




## MODEL RANGE

Customers have a choice of three wheelbase options (medium, long and extra-long) to select a bus that best fits their purpose.

For example, a GAZelle NEXT city bus can carry 19 seated and 3 standing passengers while a model intended for suburban service has features designed to make long trips more comfortable such as luggage racks, USB ports and seats with armrests.



City bus / seats 19+3+1



Suburban bus / seats 13+1+1



City bus / seats 16+1



## CABIN



The NEXT cabin is highly ergonomic and driver-friendly. Thanks to many niches, boxes and compartments there will never be a shortage of space for stowing things necessary during the journey.

Safety features include an airbag built into the steering wheel center.

Driver of any size will feel comfortable driving a GAZelle NEXT thanks to an adjustable steering column.

A 2DIM multimedia system built into the dashboard displays necessary information and provides entertainment. The driver can control the multimedia system using buttons on the steering wheel without losing focus on driving.

# PASSENGER SERVICE

GAZelle NEXT bus is ideal for comfortable and safe passenger service.

The bus is fitted with a number of advanced systems. One keeps passengers informed of the stops along the way, another monitors the situation in the passenger compartment while a cashless fare system allows the buses to be fully integrated in a complex urban transit system.

The bus's advanced safety system provides outstanding protection for the driver and passengers. Even emergency braking does not compromise the stability and steerability of the vehicle thanks to ABS brakes and an improved front suspension with new shock absorbers.

Combining an attractive income per seat with cost effectiveness, GAZelle NEXT buses represent the best-in-class passenger transportation solution. The latest modification of an extra-long model can have 5 more passenger seats thus increasing the utilization efficiency by 30%.

Choosing a bi-fuel engine that can run on compressed natural gas (CNG) and a set on CNG equipment installed straight at the factory will help to cut the operation cost by 55% and ensure compliance with Euro 5 emission standards.





## BUSINESS CLASS

In any business it is always important to have reliable friends and partners. The GAZelle NEXT bus is just one of them. You can choose any of the broad range of interior configurations that best suits your purpose while the bus will remain as comfortable and reliable as ever.

If you wish the bus can be tailored to your particular needs. A luggage compartment, seats with a multimedia system, Wi-Fi, individual air conditioner outlets, an extra heater and other features can be added on demand.

With equal ease, a GAZelle NEXT bus can be converted into a mobile office, integrated into the corporate fleet or used as an airport shuttle. It will come in handy in the travel and hotel business too.





## FAMILY VAN

Designed primarily for business use, this minibus is no stranger to private setting either.

Safe and comfortable, it is exactly the right choice if you have a large family or love going on picnics with many friends.

The GAZelle NEXT can be converted into a motorhome greatly expanding your travelling opportunities.

Affordable price and low operating cost make it an ideal family vehicle for large families that can easily and fully satisfy their unique requirements.

# GAZelle NEXT CITILINE

GAZelle NEXT CITILINE was designed specifically for urban passenger transportation. This bus with a unique factory-made frame body looks natural in city streets while large panoramic windows allow passenger not only to see where they are travelling but also to enjoy the view.

The bus's lightweight spacious passenger compartment is mounted on the proven GAZelle NEXT platform. Designed to provide a comfortable journey for up to 21 passengers, the bus is one of the best value propositions in its class. New buses are covered by two-year warranty regardless of the mileage while inexpensive spare parts will help to keep the service and maintenance cost low thereafter.

The bus has an electric door and special no-slip floor cover. The partition wall separating the driver from the passenger compartment contributes to driver's comfort and driving safety.

With a bi-fuel modification that can run on liquefied petroleum gas (LPG) you can save up to 35% of your fuel cost. Factory-installed LPG equipment means preserving full warranty.



# MODEL RANGE

The GAZelle NEXT CITILINE is available in a range of 19 to 21-seat modifications for suburban and urban use including one that is adapted specially for transportation of passengers with reduced mobility.



City bus / seats 18+1+1



Suburban bus / seats 18+0+1





High (190 cm), wide and spacious passenger compartment is comfortable to travel in. Large windows provide excellent visibility and give the feeling of "lightness" to the whole bus making it ideal as a tourist bus operating on sightseeing tours. The four-in-a-row seat arrangement that is quite

unusual for a minibus helps to combine high passenger capacity with the bus's small size that by itself is hugely advantageous in urban environment as it gives the bus its outstanding agility and maneuverability.



Thanks to conceptually new interior layout, the driver's seat is separated from the passengers. Now the driver does not get distracted while driving but still can easily monitor passengers boarding and getting off the bus. The GAZelle NEXT CITILINE bus is fitted with a heated adjustable driver's seat with lumbar support

and an armrest. The hardness and the shape of the seat have been selected to maximize driver's comfort.



An extra heater will keep the bus comfortably warm even when the temperature outside is well below the freezing point. An independent heater or an air conditioner are available as an option.



An electromechanical inward sliding door and a low footstep for easy entry and exit.



To tell the driver that a passenger wants to disembark there are red stop button in many locations in the passenger compartment and a STOP indicator in the driver's cabin.

For passengers with special needs the bus has seats with increased foot space and an extra stop button.

# SCHOOL BUSES

Today, there is much more about school than just sitting in a classroom. Increasingly more often teachers take their students out to help them develop better real-life understanding of what they study in class. Our buses have everything to support these efforts.

GAZ supplies school buses that are perfectly adapted for the transportation of children starting from the age of six. GAZ buses perform equally well whether it is about taking kids to school, on a sightseeing tour or an excursion, or about bringing a sports team or a dancing group to the venue.

The bright yellow bus body not only looks nice but stands out on the road and can be easily seen by other drivers. The bus's exterior meets all applicable standards and has required markings. Even the standard configuration contains features that greatly enhance safety including a device limiting maximum speed to 60 km/h, four-point seat belts and a device that keeps the bus stationary until the door is closed.

GAZ school buses serve their purpose perfectly as they have been designed with full understanding of what it takes to transport children safely and comfortably.



GAZelle NEXT, 16 seats



GAZelle NEXT, 24 seats



GAZelle NEXT CITILINE, 22 seats



# ADVANTAGES

GAZ is the only manufacturer that offers 4 types of engines: a modern diesel engine, new EVOTECH 3.0 gasoline engine and bi-fuel engines running on methane and propane.

## Diesel engine

This lightweight, compact and efficient engine combines outstanding power and torque with long service life, excellent performance and low fuel consumption. It is an ideal choice for vehicles expected to operate with high workload.



## Evotech gasoline engine

This 3.0l upgraded Euro-5 engine can run on gasoline and gas (CNG/LPG). Built using components supplied by leading global manufactures it is known for its outstanding reliability.



## Gas equipment

GAZelle NEXT is one of the few commercial vehicles that can be fitted with gas-powered engines directly on the assembly line. There are two types: those running on compressed natural gas (CNG) and on liquefied petroleum gas (LPG). Modern IV generation gas equipment has been certified as compliant with the UNECE regulations and meets all applicable international safety requirements.



- **Cost efficient**

Natural gas is three times cheaper than conventional liquid fuel making it possible to save money.

- **Safe**

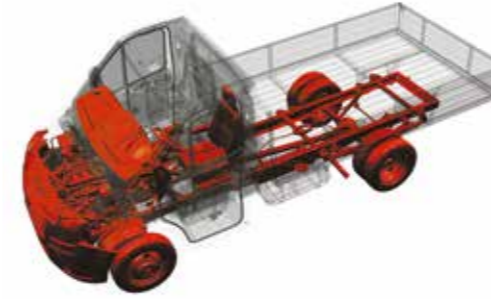
Methane is lighter than air so any leaking CNG does not sink and immediately evaporates. Besides, CNG is generally less toxic than traditional types of fuel.

- **Eco-friendly**

Natural gas burns almost completely and produces much less emissions than traditional liquid fuel and no soot at all.

- **Reliable**

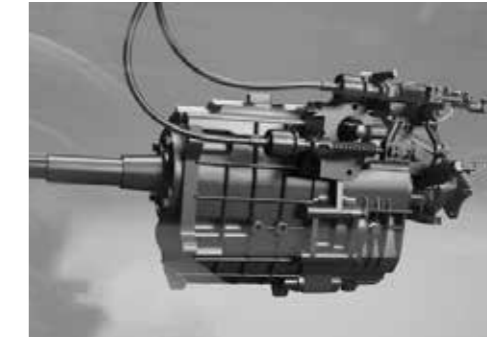
Vehicles with factory-installed gas equipment are guaranteed full warranty coverage.



GAZ buses are based on the time- and road-tested chassis of the GAZelle NEXT light commercial vehicle and have all features necessary to make them comfortable and safe.



The GAZelle NEXT body is made of zinc-plated parts with cathoretic protection which guarantees them to stay free from deep corrosion for 8 years regardless of mileage.



Upgraded 330 N·m transmission and prospective models fitted with a 6-speed transmission.



The NEXT line of vehicles has a number of safety features that include 9th generation ABS, driver and passenger airbags and seat belts with pre-tensioners.



Independent wishbone suspension ensures smooth ride and stability. Working in tandem with the steering system, it contributes greatly to the excellent precision of steering.



An upgraded rear suspension with new leaf springs and state-of-the-art shock absorbers contributes to improved road stability and smooth operation when the vehicle is fully loaded.



The new strong Spicer-type axle gives the bus increased passenger capacity.



Double-circuit braking system has substantial redundant strength while increased brake disk surface keeps the vehicle stable and controllable even during emergency braking.

# STANDARD FEATURES

## GAZelle NEXT

PARAMETERS	Vehicle Model					
	A65R22 / A65R23	A65R32 / A65R33	A65R35	A65R32/ A65R33	A62R32/ A62R33	A65R52
Bus class	A	A	A	A	B	A
Passenger capacity, pers.	14	17	17	22	16	22
including sitting passengers, pers.	13	14 or 16	16	16	16	19
Technically permissible maximum vehicle weight, kg	4200	4200	4200	4600	4200	4950
Curb weight, kg:						
with engine ISF2.8	2780	3010	-	3055	2990/3010	3245
with engine A274/A275	2650	2880	2980	-	2880	-
Technically permissible maximum load on each axis of the vehicle, kg:						
front	1650	1650	1650	1650	1650	1650
rear	2670	2670	2670	3300	2670	3300
Wheelbase, mm	3145	3745	3745	3745	3745	3950
Clearance (below the rear axle housing at GVW), mm	170	170	170	170	170	170
Minimum turning radius by the outside front wheel tread, m	5.7	6.5	6.5	6.5	6.5	7.2
Fuel consumption rate, measured according to a special method, at constant speed, liter per 100 km:						
60 km/h	8.5/10.5	8.5/10.5	9.8/11.8	8.5/10.5	8.5/10.5	9.0
80 km/h	11.5/13.0	11.5/13.0	12.15/14.5	11.5/13.0	11.5/13.0	11.5
Maximum speed on a horizontal smooth highway, km/h	130	130	130	130	130	130
Overhang angles (under load), degrees:						
front	24	24	24	24	24	24
rear	10	10	9	10	10	7
Maximum uphill gradient under full load, %	26	26	26	26	26	26

TRANSMISSION		BRAKE CONTROL	
Clutch	Single, dry plate, hydraulic	Primary brake system	Dual-circuit, with hydraulic drive and vacuum booster
Gearbox	Manual, 5-speed	Break gear:	
Shaft drive	Two shafts with three universal joints and intermediate bearing	front wheels	Disc
Rear axle:		rear wheels	Drum/Disc
final drive	Hypoid, gear ratio 4.3, or 4.556, or 5.125	Emergency brake system	Every circuit of the primary breaking system
differential	Bevel, gear	Parking brake system	Mechanic cable drive connected to rear wheels breaking mechanisms
RUNNING GEAR		STEERING	
Wheels	Plate, with sealed tire 5½ Jx16H2	Steering gear	Integrated (with steering booster), rack-and-pinion
Tires	Pneumatic, radial, tubeless 185/75R16C	Steering column	Tilt steering column
Suspension:		BODY	
front	Independent, transversal swinging arm with coil spring and stabilizer bar	Body	All-metal, semi-bonnet, with five doors: two cab doors, a sliding side door and two swing rear doors
rear	Two longitudinal, semi-elliptical leaf-springs with auxiliary leaf-springs and stabilizer bar or without it		
Shock absorbers	Gas charged, telescopic, double-acting		

ENGINE	ISF2.8s4R148/ISF2.8s5F148	A274/A275	A2755
Type	Turbo diesel with intercooler	Gasoline, 4-stroke, injection	Bi-fuel, 4-stroke, injection
Number and arrangement of cylinders	4, in-line	4, in-line	4, in-line
Cylinders capacity, l	2.77	2.69	2.69
Compression ratio	16.9	10.0	10.0
Maximum power, kW (hp)			
when operating on conventional fuel (diesel or gasoline)	102.7 (139.6)/110 (149,6)	78.5 (106.8)	78.5 (106.8)
when operating on gas			76.7 (104.3)
At crankshaft speed, rpm	3400	4000	4000
Maximum torque, net, N·m (kgf·m)			
when operating on conventional fuel (diesel or gasoline)	320 (32.6)/330 (33,6)	220.5 (22.5)	220.5 (22.5)
when operating on gas			219 (22.3)
At crankshaft speed, rpm	1400—2700/1600—2700	2200—2500	2200—2500



# STANDARD FEATURES

## GAZelle NEXT CITILINE

PARAMETERS	Bus Model			
	A63R42	A64R42	A63R45	A64R45
Bus class	B	A	B	A
Passenger capacity, pers.	18	19	18	19
including sitting passengers, pers.	18	18	18	18
Gross weight, kg	4292	4252	4288	4244
Curb weight of the bus, kg	3014	2960	3010	2958
Distribution of road load of GVW through tires, kg				
front	1465	1489	1388	1373
rear	2827	2763	2900	2871
Clearance (below the rear axle housing at GVW), mm	170	170	170	170
Minimum turning radius by the outside front wheel tread, m	6.6	6.6	6.6	6.6
Fuel consumption rate, measured according to a special method, at constant speed, liter per 100 km:				
60 km/h	8.5	8.5	10.5 (gasoline)/12.6 (gas)	10.5 (gasoline)/12.6 (gas)
80 km/h	11.5	11.5	13.0 (gasoline)/15.6 (gas)	13.0 (gasoline)/15.6 (gas)
Maximum speed on a horizontal smooth highway, km/h	110	110	105	105
Overhang angles (under load), degrees:				
front	22	22	22	22
rear	14	14	14	14
Maximum uphill gradient under full load, %	25	25	20	20

TRANSMISSION		BRAKE CONTROL	
Clutch	Single, dry plate, hydraulic	Primary brake system	Dual-circuit, with hydraulic drive and vacuum booster
Gearbox	Manual, 5-speed	Break gear:	
Shaft drive	Two shafts with three universal joints and intermediate bearing	front wheels	Disc
Rear axle:		rear wheels	Drum
final drive	Hypoid, gear ratio 4.3, or 4.55,6 or 5.125	Emergency brake system	Every circuit of the primary braking system
differential	Bevel, gear	Parking brake system	Mechanic cable drive connected to rear wheels breaking mechanisms
RUNNING GEAR		STEERING	
Wheels	Plate, with sealed tire 5½ Jx16H2	Steering gear	Integrated (with steering booster), rack-and-pinion
Tires	Pneumatic, radial, tubeless 185/75R16C	Steering column	Tilt steering column
Suspension:		BODY	
front	Independent, transversal swinging arm with coil spring and stabilizer bar	Body	Frame type, semi-bonnet, with two doors: front service door and rear spare door
rear	Two longitudinal, semi-elliptical leaf-springs with auxiliary leaf-springs and stabilizer bar or without it	Front service door	Single-leaf or double-leaf swing out type, with electromechanical drive
Shock absorbers	Gas charged, telescopic, double-acting	Rear spare door	Manually opened swing out door on overhead hinges

ENGINE	ISF2.8s4R129/ISF2.8s5F148	A274/A275	A2755
Type	Turbo diesel with intercooler	Gasoline, 4-stroke, injection	Bi-fuel, 4-stroke, injection
Number and arrangement of cylinders	4, in-line	4, in-line	4, in-line
Cylinders capacity, l	2.77	2.69	2.69
Compression ratio	16.5/16.9	10.0	10.0
Maximum power, kW (hp)			
when operating on conventional fuel (diesel or gasoline)	88.7 (120.6)/102.7 (139.6)	78.5 (106.8)	78.5 (106.8)
when operating on gas			76.7 (104.3)
At crankshaft speed, rpm	3200/3400	4000	4000
Maximum torque, net, N·m (kgf·m)			
when operating on conventional fuel (diesel or gasoline)	295 (30,0)/320 (32.6)	220.5 (22,5)	220.5 (22.5)
when operating on gas			219 (22.3)
At crankshaft speed, rpm	1400—2700/1600—2700	2200—2500	2200—2500

# OPTIONS

## GAZelle NEXT

	A65R32	A65R33/ A65R35
Trip computer	S	S
Transmission remote control lever	S	S
Increased fuel tank (80 l, plastic)	S	S
Starting preheater	S	-
Cruise control	O	-
Brake system with ABS	S	S
Rear suspension stabilizer bar	S	S
Rear wheels mudguards	S	S
Driver's seat "Standard" (with an armrest, a separate height and horizontal pillow adjustment options and an adjustable backrest tilt)	S	S
Height adjustable steering column	S	S
Power steering	S	S
Cab central locking (without rear doors CL)	S	S
Heated rear view mirrors	S	S
Additional heater	S	S
Rear door opening up to 180°	O	S
Emergency ventilation hatch with plastic cover	S	S
Interior vent windows	S	S
Bottle/cup holders in the upholstery of the sidewall (niche volume 0.5 l)	S	S
Automatic foot step of the sliding door	S	S
Fixed additional foot step of the rear doors	S	S
12V socket on the dashboard	S	S
Dual circuit A/C	O	-

S — Standard package equipment    O — optional    - — not installed

\* — Not available for all modifications

## GAZelle NEXT

	A65R32	A65R33/ A65R35
Radiator heater	S	S
Spare wheel	S	S
Handrails in the cabin	S	S
Seat for passengers with reduced mobility	S	S
Seats in the passenger compartment with 2-point belts, in the cabin with 3-point belts	S	S
Central passenger seat armrest (in the cabin)	S	S
Overhead console	S	S
2 DIN headunit with steering wheel controls	S	S
Set of door pockets	O	O
Passenger compartment mirror	O	O
Tachograph	O	O
Heat-absorbing glass	O	O
Independent air heater (rear part of the passenger compartment)	O	O
Two-layer coating	O	O
Fog lights	O	O
Electric drive of external rear view mirrors	O	O
Driver's seat "Lux" (with "Standard" seat's adjustments, lumbar support and heating)	O	O
High capacity battery	O	-
Airbags for driver and front passengers*	O	O

S — Standard package equipment    O — optional    - — not installed

\* — Not available for all modifications

# OPTIONS

## GAZelle NEXT CITILINE

	CITY BUS A64R42/A64R45
Passenger seats, installed in the direction of travel, with vinyl leatherette upholstery	S
Passenger seats, installed in the direction of travel, with pileless fabric upholstery	O
Two-point passenger inertia seat belts	O
Seat for passengers with reduced mobility. Equipped with additional stop request button	S
Safety handrails on passenger seats (installed on all seats except the rear row)	S
Horizontal handrail in the cabin	S
Heat-absorbing glass windows of the passenger compartment	S
Linoleum flooring with improved anti-slip and anti-wear properties	S
Interior led lighting	S
Call buttons and light board	S
Emergency and ventilation hatch	S
Standard heater in the instrument panel	S
Additional liquid heater, powered by the cooling system in the front of the passenger compartment	S/O
Driver's seat "Standard" (with separate height and horizontal adjustment and adjustable tilt)	S
Radio pre-equipment (wiring, places for speakers' installation)	S
Preheater	O/-
Reinforced rear suspension, anti-roll bars	S
Cruise control	S/-
High capacity battery (85 Ah)	S/-
Tachograph	O
Independent air heater in the rear part of the passenger compartment	O
Driver's seat "Lux" (with "Standard" seat's adjustments, left-side armrest, lumbar support and heating)	O
Fog lights	O
Passenger compartment mirror	O
Mirror in the passenger compartment	O
Illuminated destination sign mounted on the top facing of the windshield	O
Sound amplifying device with microphone and two loudspeakers in the passenger compartment	O
Dual circuit A/C	O/-

S — Standard package equipment    O — optional    - — not installed

\* — Not available for all modifications

## GAZelle NEXT CITILINE

	SUBURBAN BUS A63R42/A63R45
Passenger seats, installed in the direction of travel, with vinyl leatherette upholstery	—
Passenger seats, installed in the direction of travel, with pileless fabric upholstery	O
Two-point passenger inertia seat belts	O
Seat for passengers with reduced mobility. Equipped with additional stop request button	-
Safety handrails on passenger seats (installed on all seats except the rear row)	S
Horizontal handrail in the cabin	S
Heat-absorbing glass windows of the passenger compartment	S
Linoleum flooring with improved anti-slip and anti-wear properties	S
Interior led lighting	S
Call buttons and light board	S
Emergency and ventilation hatch	S
Standard heater in the instrument panel	S
Additional liquid heater, powered by the cooling system in the front of the passenger compartment	S
Driver's seat "Standard" (with separate height and horizontal adjustment and adjustable tilt)	O
Radio pre-equipment (wiring, places for speakers' installation)	S
Preheater	S/-
Reinforced rear suspension, anti-roll bars	O
Cruise control	S/-
High capacity battery (85 A·h)	S/-
Tachograph	O
Independent air heater in the rear part of the passenger compartment	O
Driver's seat "Lux" (with "Standard" seat's adjustments, left-side armrest, lumbar support and heating)	O
Fog lights	O
Passenger compartment mirror	O
Mirror in the passenger compartment	O
Illuminated destination sign mounted on the top facing of the windshield	O
Sound amplifying device with microphone and two loudspeakers in the passenger compartment	O
Dual circuit A/C	O/-

S — Standard package equipment    O — optional    - — not installed

\* — Not available for all modifications

# COLOURS

## GAZelle NEXT



TITANIUM\*



SILVER LIGHT\*

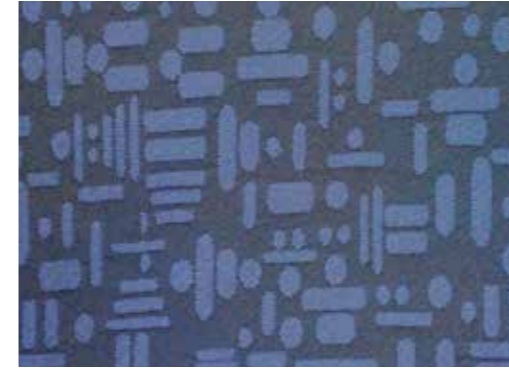


WHITE

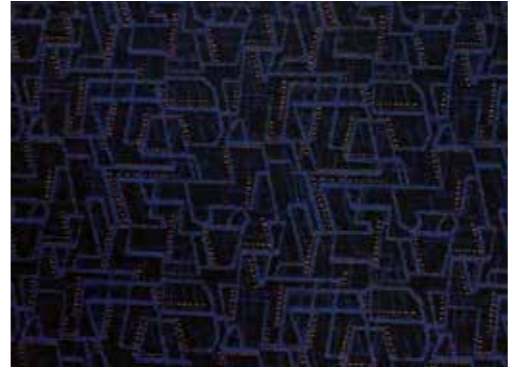


OTHER COLOR OPTIONS

# SEAT UPHOLSTERY



LIGHT



MATRIX



WINK



CARBON

## GAZelle NEXT CITILINE



CHILE



TUNISIA



WHITE



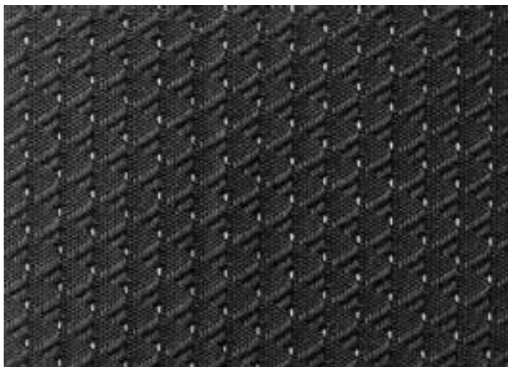
CYPRUS



STEP



SWAN



TACK



ILLUSION

\* Enamels with metal effect. Option

