



DISMANTLING CATALOG

SOBOL Comby

Introduction

This dismantling catalog is a preparation guidance of the LCV “Sobol Comby” for recycling, drain and extraction of non-metallic components, suitable for recycling and recovery at the end of life. The document provides information on the necessary equipment, type of fasteners used in construction, safety measures and complexity of the process.

Safety requirements

During the work is allowed to use equipment and tools that are functionally similar to those in the instructions, but the usage of which will provide the required (or better) performance and safety.

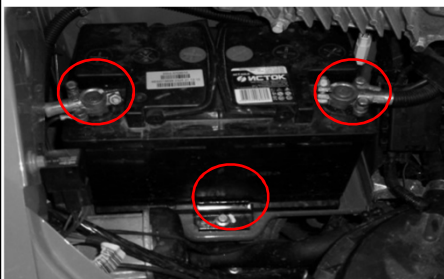
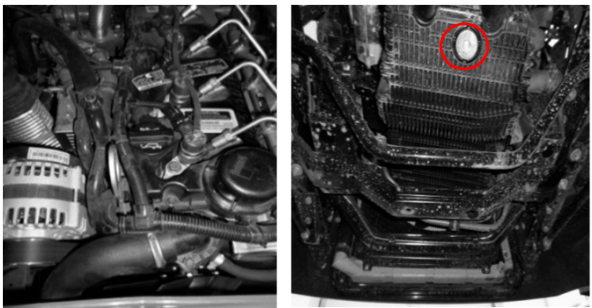
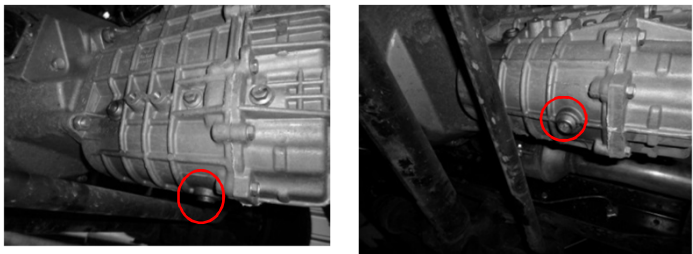
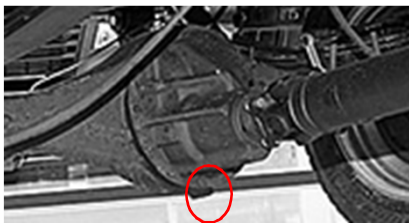
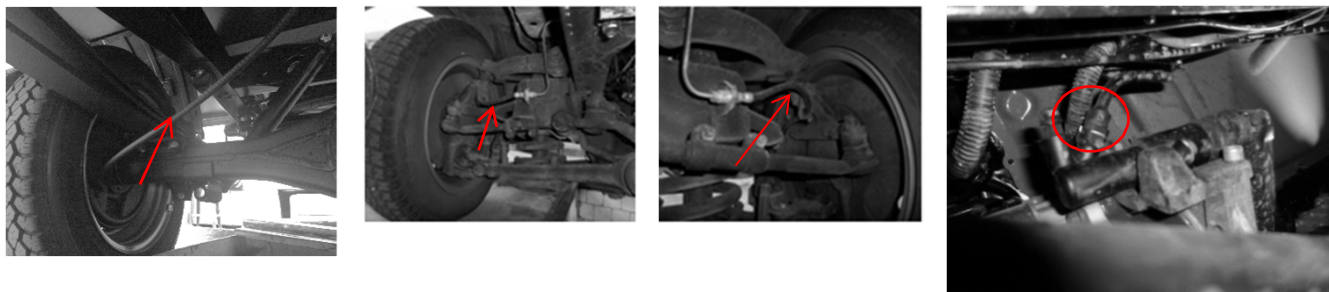
To carry out the dismantling process at least two workers are required.

ATTENTION!

Implementation of the operations implies necessity of usage of personal protective equipment (bench suit/overalls, gloves, goggles). When draining fluids additionally use a rubber apron, rubber gloves, sleeves/cuffs. Do not allow fluids to drain out of the special packaging. Each type of fluid is necessary to be drained in a special individual packaging.

In order to avoid actuating of airbag system do not hit the steering wheel, dashboard and system control unit.

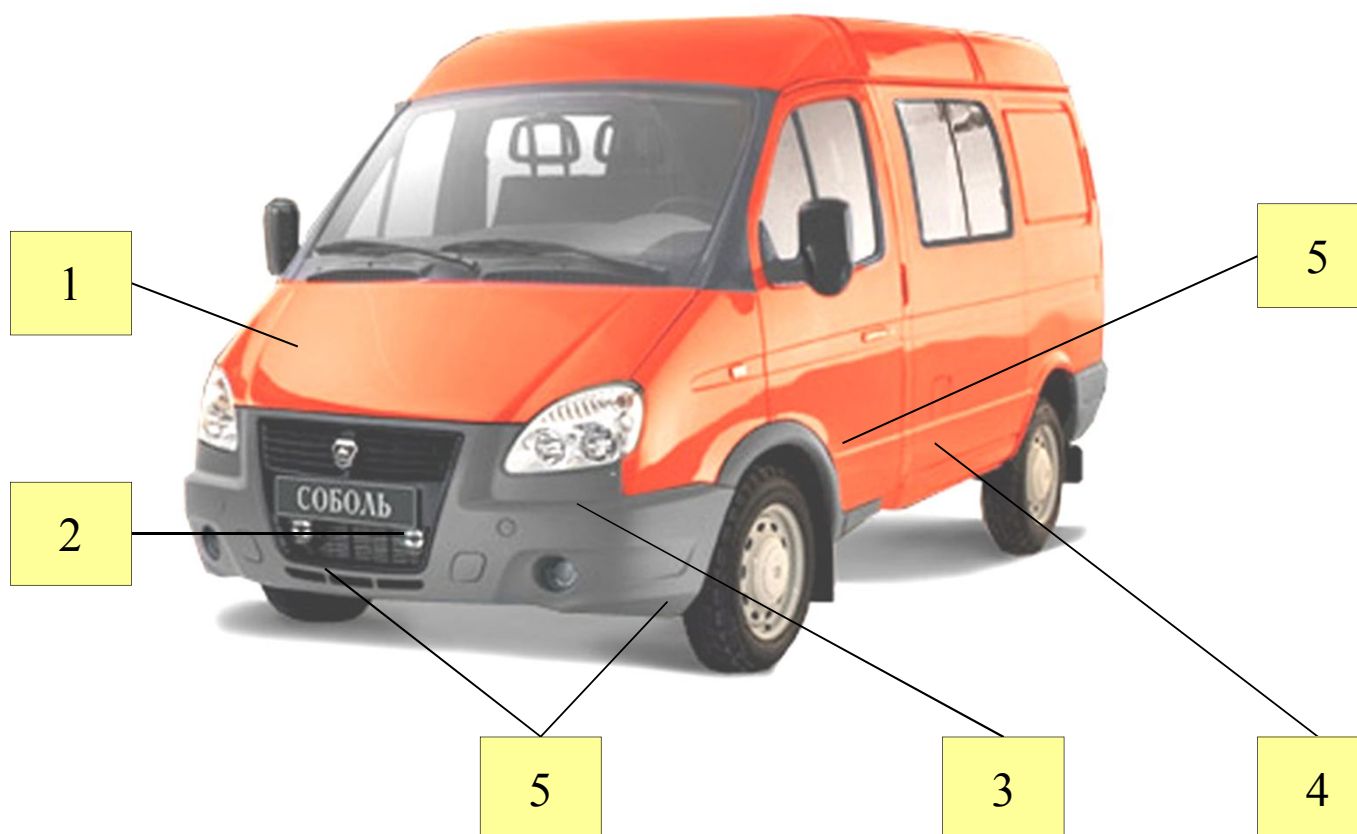
Obligatory dismantling:

1	2	3
		
4	5	
		

Obligatory dismantling:

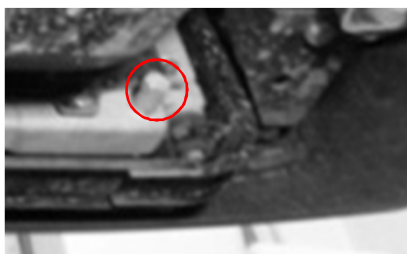
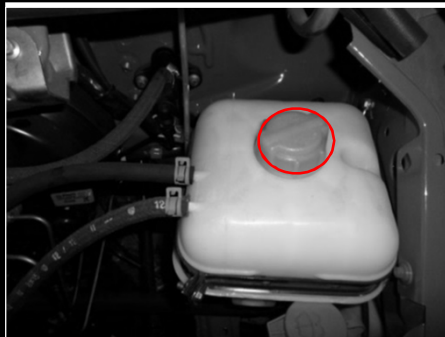
№	Name of the component	Amount, amt.	Weight, g	Removal time	Component's fasteners	Tools	Method of dismantling
1	Rechargeable Battery 75 Ah filled and charged	1	16754	2min 12 sec	Bolt 10 - 3 pcs.	- Removable head / wrench 10	- Loosen the screws of terminals - Loosen the fastening - Remove
2	Motor oil (engine)		4500	8 min 30 sec	Plug	- Key tetrahedral L-shaped 13 mm. - Capacity of a minimum 5 liters	- Unscrew the plug of the engine oil filler - Unscrew the plug of the engine undertray - Pour into a container
3	Transmission oil (gearbox)		1080	8 min	Plug	- Allen wrench 12 - Capacity of a minimum 6 liters	- Unscrew the filler plug - Unscrew the drain plug - Pour into a container
4	Transmission oil (rear axle)		3000	13 min	Plug	- Allen wrench 12 - Capacity of a minimum 6 liters	- Unscrew the filler plug - Unscrew the drain plug - Pour into a container
5	Brake fluid (brakes and clutch)		825	3 min 12 sec		- Knife - 4 tanks of at least 1 liter each	- Release the brake fluid reservoir cap - Trim the brake hoses of front wheels and rear contour - Cut the pipe of the hydraulic clutch - Pour into the tanks

Obligatory dismantling:

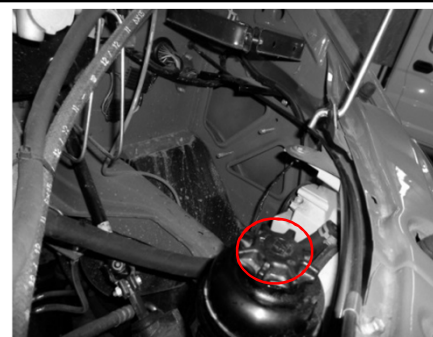


Obligatory dismantling:

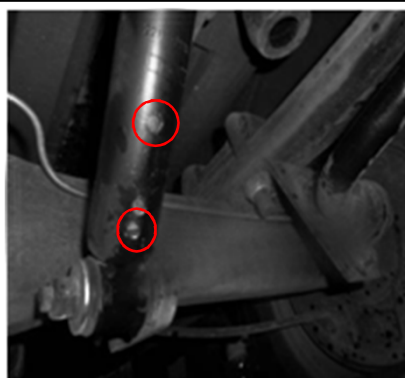
6



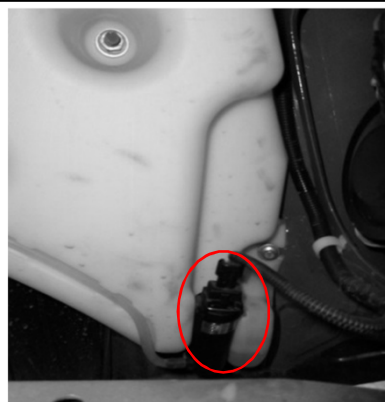
7



8



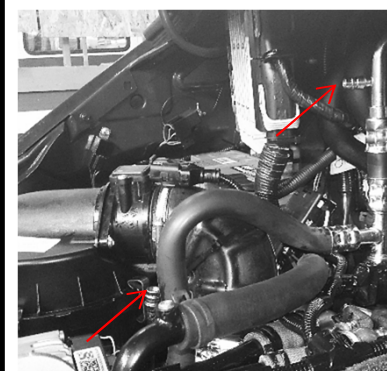
9



10



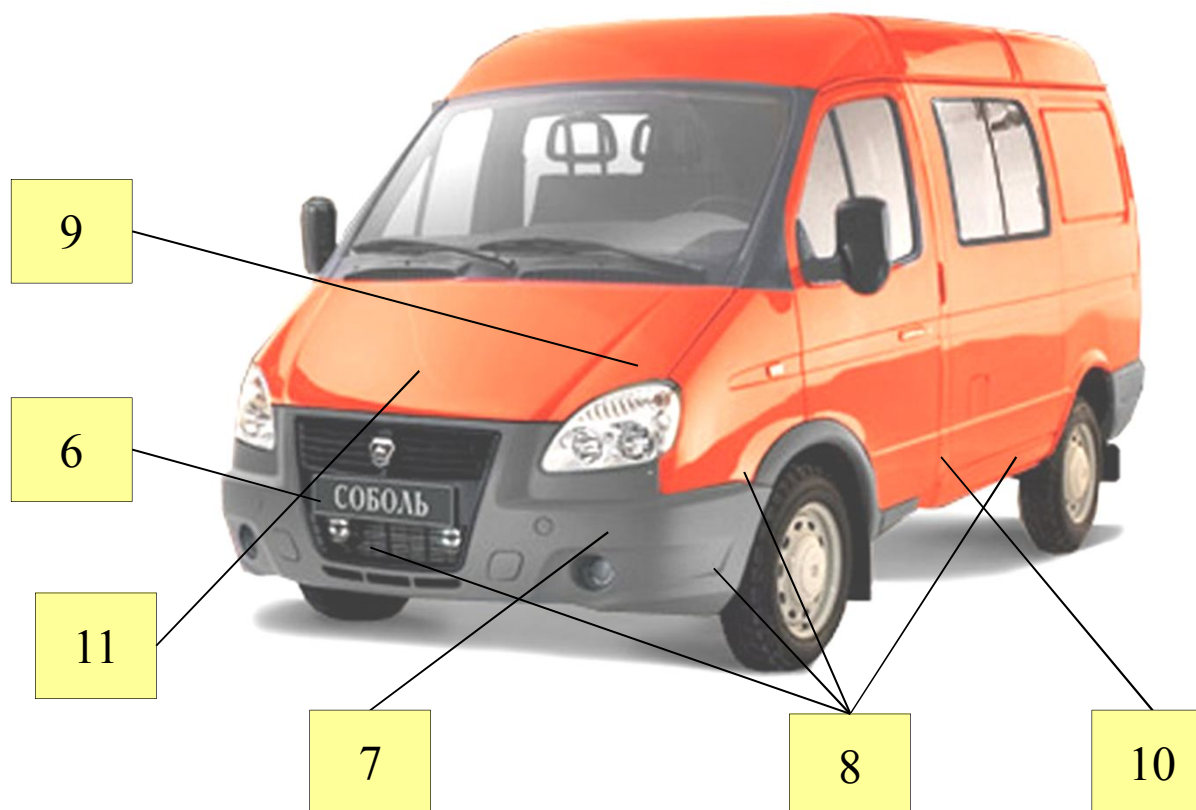
11



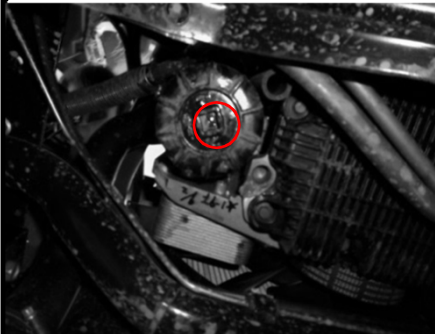


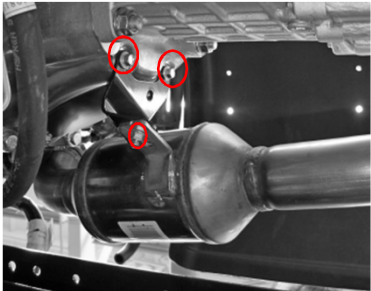
Obligatory dismantling:

№	Name of the component	Amount, amt.	Weight, g	Removal time	Component's fasteners	Tools	Method of dismantling
6	Antifreeze (engine)		16350	5 min 20 sec	Plug	- Removable head 17 - Capacity of a minimum 15 liters	- Unscrew the expansion tank cap - Remove the radiator plug - Pour into a container
7	Oil (power steering system)		1080	3 min 17 sec	Bolt 22 - 1 pcs.	- Knife - Jack - Capacity of a minimum 2 liters	- Unscrew the power steering tank cap - Cut the hose of one of the contours of power steering pump - Pour into the container by turning the steering wheel from stop to stop at least 3 times
8	Suspension fluid (front and rear suspension shock absorbers)	4	260	5 min 20 sec		- Electric drill - Drill with a 5 mm diameter - Capacity of a minimum 1 liter	- Drill two holes in the shock absorber at a distance of 60 and 20 mm from the bottom edge - Pour into a container
9	Washing liquid (windshield washing system)		4525	45 sec		- Flat-blade screwdriver - Capacity of a minimum 6 liters	- Remove the electric pump - Pour into a container
10	Fuel (fuel tank)		53760	5 min 30 sec		- Awl 0.5-20 mm. - Capacity of a minimum 70 liters	- Make a hole in the fuel tank - Drain the fuel
11	Refrigerant		850	2 min		- Station for filling and recovery of refrigerant for car air conditioners	- Drain the refrigerant

Obligatory dismantling:

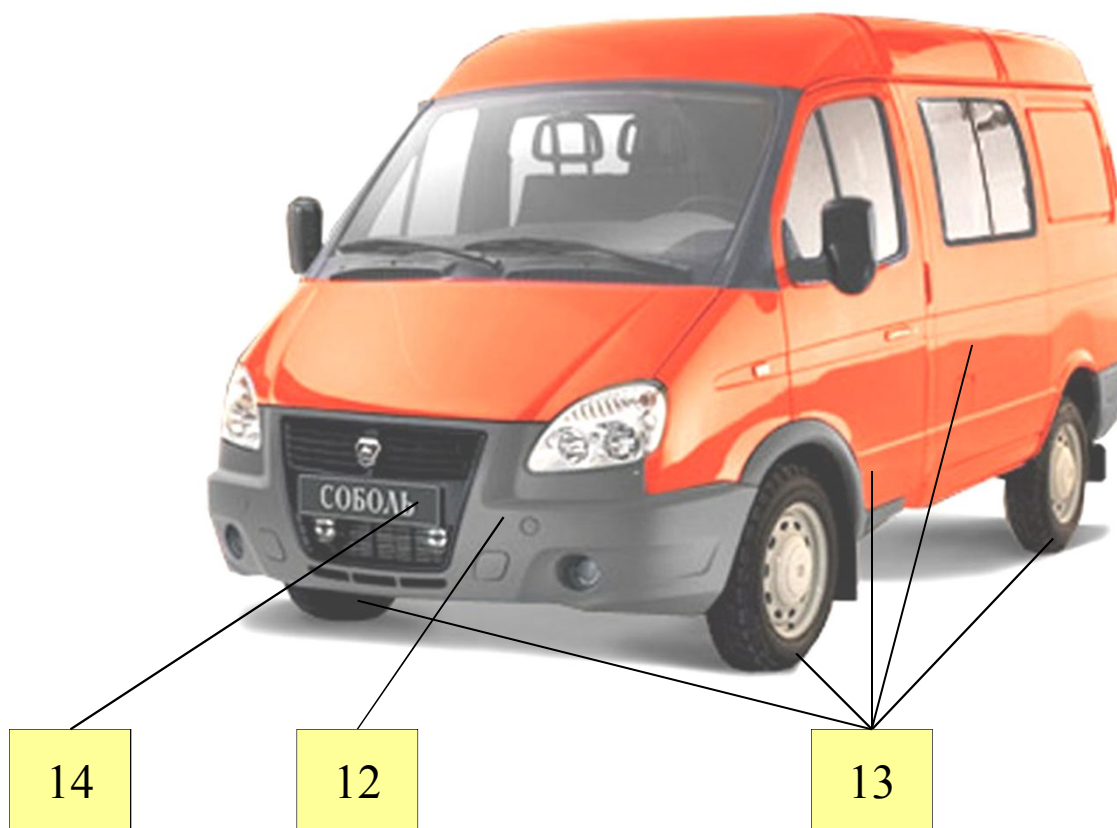


Obligatory dismantling:

12	13	14
	 	

№	Name of the component	Amount, amt.	Weight, g	Removal time	Component's fasteners	Tools	Method of dismantling
12	Oil filter	1	600	2 min		- Key tetrahedral L-shaped 8mm.	- Remove the filter
13	Tires	5	11400	4 min 30 sec	Bolt 19 - 1 pcs. Bolt 22 - 5 pcs.	- Removable head 19 - Wheelbrace 22 - Jack - Equipment for tires removal	- Remove the wheel - Remove the tire
14	Converter	1	2200	4 min	Clamp - 1 pcs. Bolt 10 - 3 pcs. Nut 12 - 3 pcs.	- Removable head / wrench 10 - Removable head 10 - Removable head 10	- Loosen the fastening - Remove

Obligatory dismantling:



Recommended dismantling: Exterior - polymers

15



16



17



18



19



Recommended dismantling:

Exterior - polymers

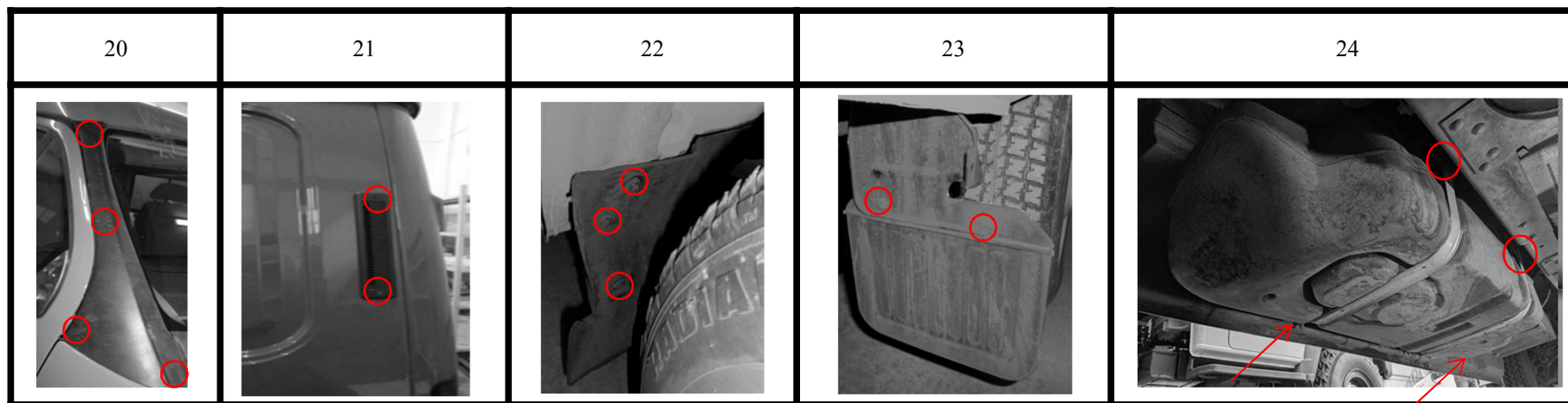
№	Name of the component	Amount, amt.	Weight, g	Removal time	Component's fasteners	Marking component	Tools	Method of dismantling
15	Front bumper panel	1	3400	5 min	Screw – 2 pcs. Bolt M6 – 5 pcs. Screw ISO 7380 (INBUS) M6 – 4 pcs.	PP-EPDM	- Phillips screwdriver - Removable head 10 - Key INBUS 4	- Loosen the fastening - Remove
16	Rear Bumper	2	829	40 sec	Screw - 3 pcs. Allen screw - 2 pcs.	PP-EPDM	- Flat-blade screwdriver - Phillips screwdriver - Allen wrench S24	- Loosen the fastening - Remove
17	Front fender arch	2	360	2 min 10 sec	Bolt - 3 pcs.	PP-EPDM	- Removable head 10 - Flat-blade screwdriver	- Loosen the fastening - Remove
18	Decorative overlay	2	260	2 min	Bolt - 2 pcs. Screw - 1 pcs. Rivets - 1 pcs.		- Removable head 10 - Phillips screwdriver - Flat-blade screwdriver	- Loosen the fastening - Remove
19	Outer front panel bottom trim	2	420+ 450	1 min 30 sec	Plug - 4 pcs. Screw - 4 pcs.	PP-EPDM	- Phillips screwdriver	- Loosen the fastening - Remove

Recommended dismantling: Exterior - polymers



Recommended dismantling:

Exterior - polymers







№	Name of the component	Amount, amt.	Weight, g	Removal time	Component's fasteners	Marking component	Tools	Method of dismantling
20	Outer pillar trim	2	350	2 min	Plug - 4 pcs. Screw - 4 pcs.	PP-EPDM	- Phillips screwdriver	- Loosen the fastening - Remove
21	Sidewall vent casing	2	40	16 sec	Screw - 2 pcs.	PVC-P	- Screwdriver	- Loosen the fastening - Remove
22	Sidewall front apron	2	1470	1 min 30 sec	Bolt - 3 pcs.	R/PP	- Removable head 8	- Loosen the fastening - Remove
23	Rear fender shield apron	2	210	30 min	Bolt - 2 pcs.	R/PP	- Removable head 10	- Loosen the fastening - Remove
24	Fuel tank	1	12000	2 min	Plug - 4 pcs.	PE-HD	- Removable head 13	- Loosen the fastening - Remove

Recommended dismantling: Exterior - polymers



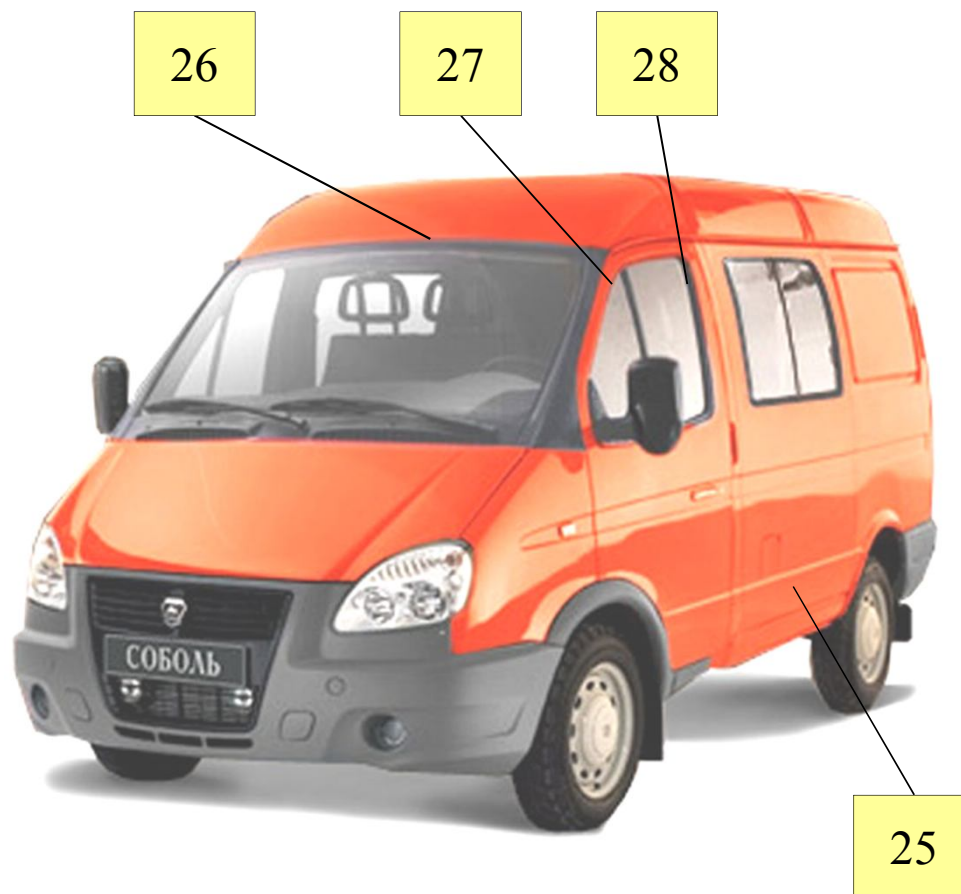
Recommended dismantling:

Exterior - elastomers







25	26	27	28
			

№	Name of the component	Amount, amt.	Weight, g	Removal time	Component's fasteners	Marking component	Tools	Method of dismantling
25	Rear suspension buffer	2	460	1 min 10 sec	Bolt 19 - 1 pc.	IR	- Removable head 19	- Loosen the fastening - Remove
26	Windshield seal	1	270	5 sec		PVC-P		- Remove manually
27	Fixed window seal (door window)	2	350	5 sec		PVC-P		- Remove manually
28	Seal sliding window	2	415	5 sec		EPDM+St		- Remove manually

Recommended dismantling: Exterior - elastomers



Recommended dismantling: Exterior - glass parts

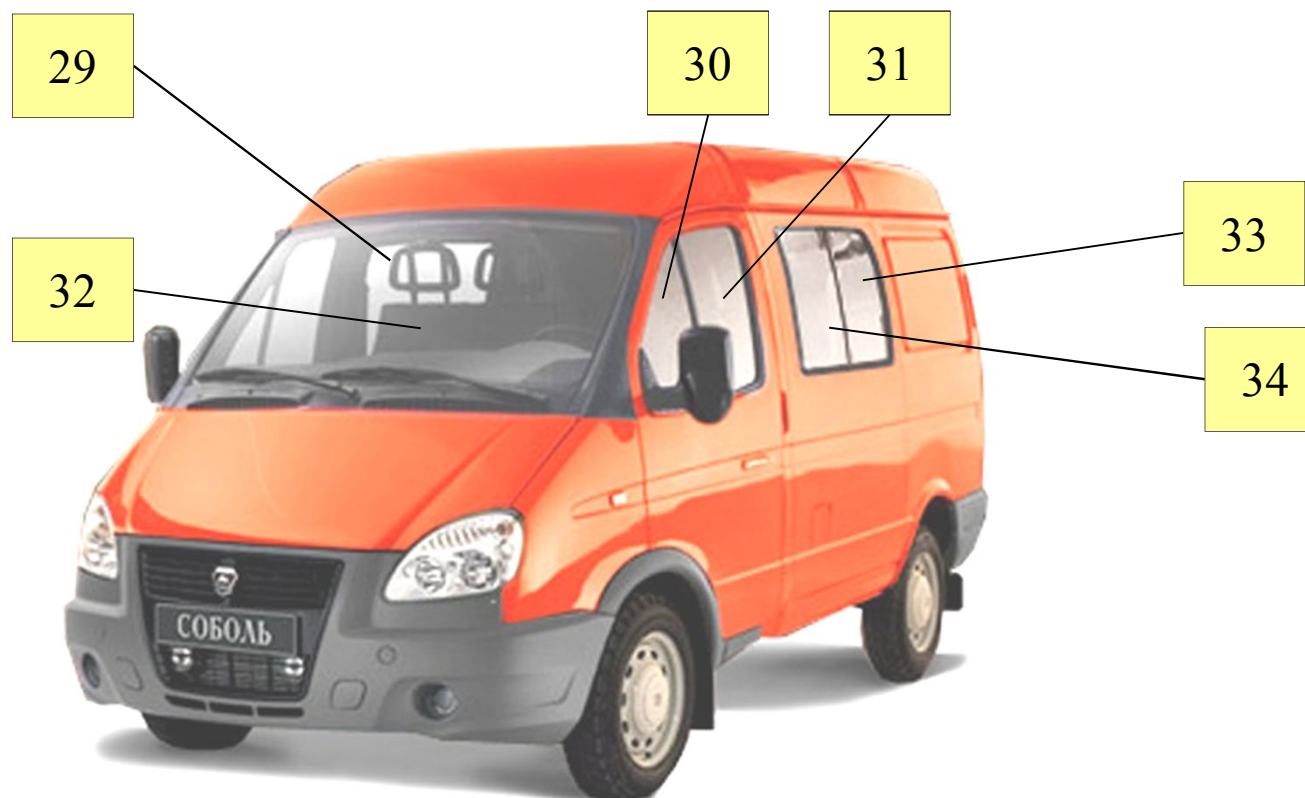
29	30	31	32
			
33	34		
			

Recommended dismantling:

Exterior - glass parts

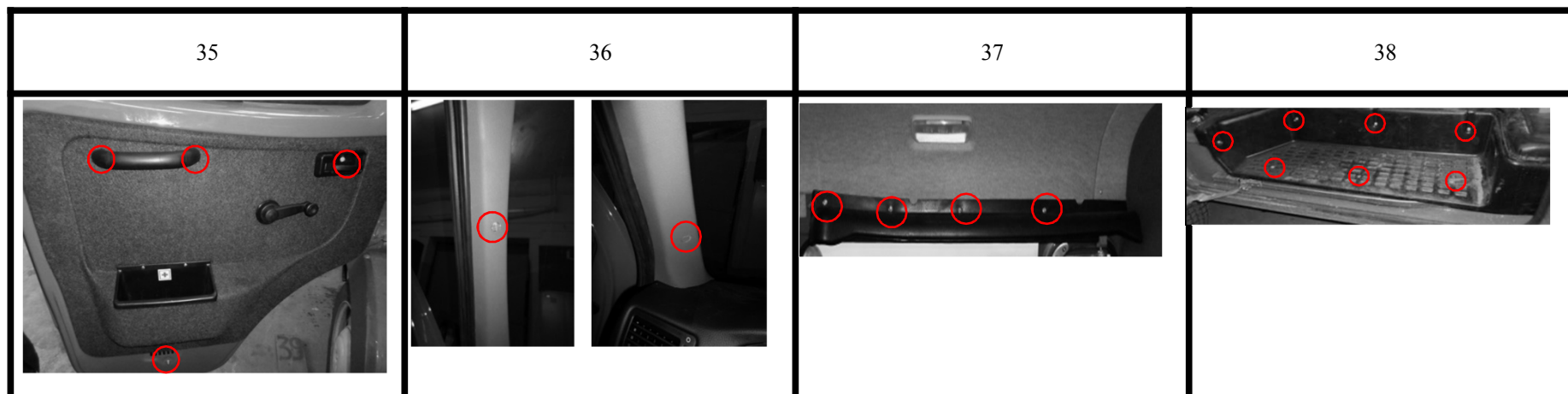
№	Name of the component	Amount, amt.	Weight, g	Removal time	Component's fasteners	Marking component	Tools	Method of dismantling
29	Sliding door glass	1	6400	3 min			- Flat-blade screwdriver	- Put pressure on the glass - Remove the seal - Remove the glass
30	Door fixed window	2	2100	1 min			- Flat-blade screwdriver	- Put pressure on the glass - Remove the seal - Remove the glass
31	Door sliding window	2	3800	1 min			- Flat-blade screwdriver - Removable head 8	- Loosen the fastening - Remove
32	Windscreen	1	21210	12 min			- A string for extracting glued glass - Awl	- Cut the adhesive - Remove the glass
33	Moving glass left	1	2200	1 min				- Remove the glass
34	Glass motionless left	1	2250	1 min				- Remove the glass

Recommended dismantling: Exterior - glass parts



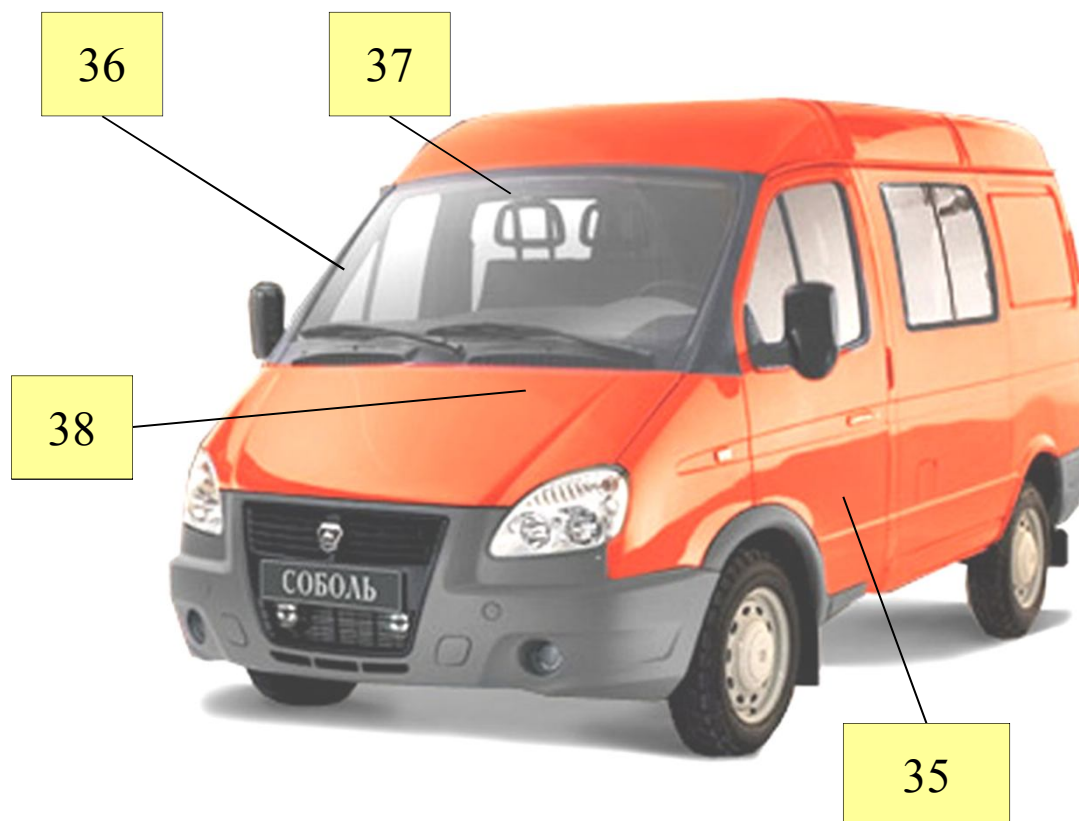
Recommended dismantling:

Interior - polymers



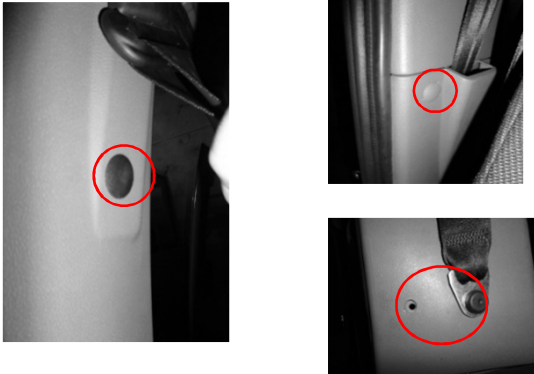
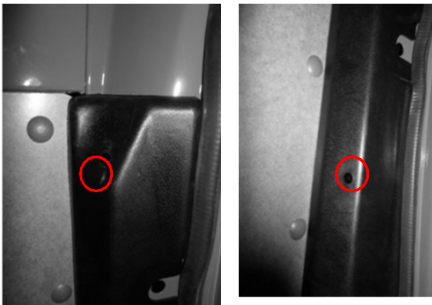
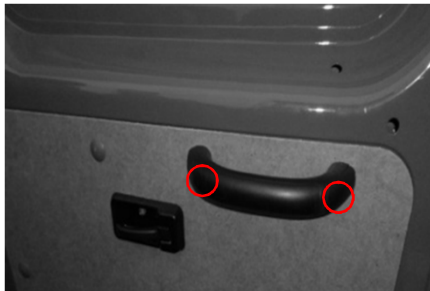
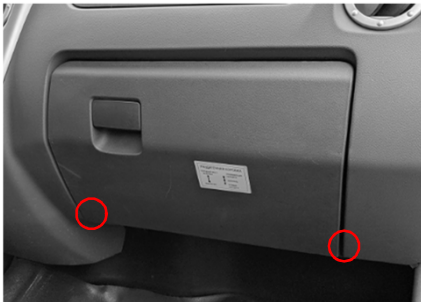
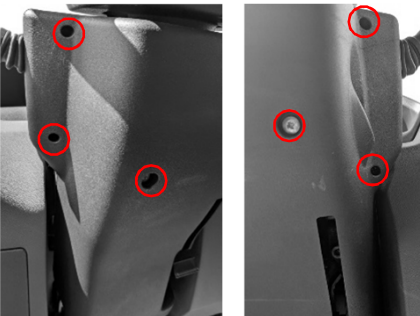



№	Name of the component	Amount, amt.	Weight, g	Removal time	Component's fasteners	Marking component	Tools	Method of dismantling
35	Handhold (front doors)	2	69	1 min	Plug - 2 pcs. Nut - 2 pcs.	PP	- Flat-blade screwdriver - Removable head 8	- Loosen the fastening - Remove
36	Inclined rack overlay	2	290	1 min	Plug - 2 pcs. Screw - 2 pcs.	PP+EPDM-TD20	- Phillips screwdriver	- Loosen the fastening - Remove
37	Upper rail cover (sliding door)	1	577	1 min 30 sec	Bolt - 4 pcs.	PP	- Removable head 8	- Loosen the fastening - Remove
38	Sliding door step decking	1	1670	1 min 10 sec.	Screw - 3 pcs. Bolt 8 - 4 pcs.	PP-EPDM	- Flat-blade screwdriver - Removable head 8	- Loosen the fastening - Remove

Recommended dismantling: Interior - polymers



Recommended dismantling: Interior - polymers

39	40		41
			
42	43	44	45
			

Recommended dismantling:

Interior - polymers

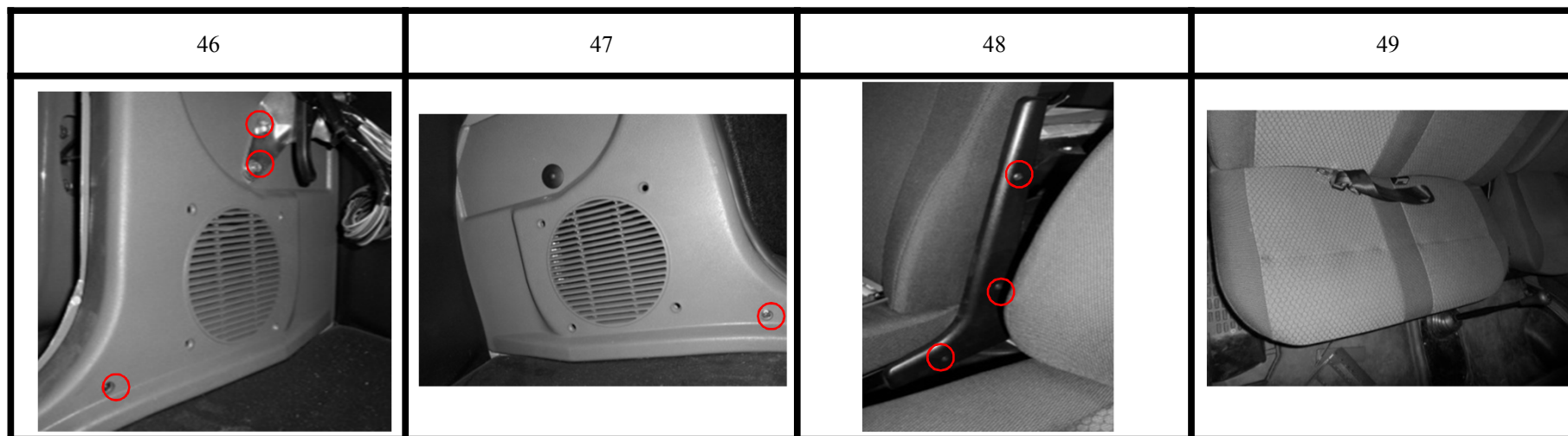
№	Name of the component	Amount, amt.	Weight, g	Removal time	Component's fasteners	Marking component	Tools	Method of dismantling
39	Front door step decking	2	750	1 min	Screw - 2 pcs. Bolt 8 - 2 pcs.	PP-EPDM	- Phillips screwdriver - Removable head 8	- Loosen the fastening - Remove
40	Middle pillar interior upper/bottom	2	390+407	3 min 25 sec	Rivets - 5 pcs. Bolt 17 - 2 pcs. Screw - 1 pc.	ABS	- Phillips screwdriver - Flat-blade screwdriver - Removable head 17	- Loosen the fastening - Remove
41	Sidewall trim pad	2	252	1 min	Screw - 2 pcs.	PP-EPDM	- Phillips screwdriver	- Loosen the fastening - Remove
42	Handhold (rear door)	1	69	1 min 20 sec	Bolt - 2 pcs.	PP	- Flat-blade screwdriver - Removable head 8	- Loosen the fastening - Remove
43	Storage box	1	1200	40 sec		PP+EPDM-TD15		- Remove
44	Upper steering wheel cover	1	200	2 min	Bolt - 6 pcs.	ABS/PC	- Phillips screwdriver	Loosen the fastening - Remove
	Lower steering wheel cover	1	360					
45	Dashboard insert	1	50	20 sec				- Remove

Recommended dismantling: Interior - polymers



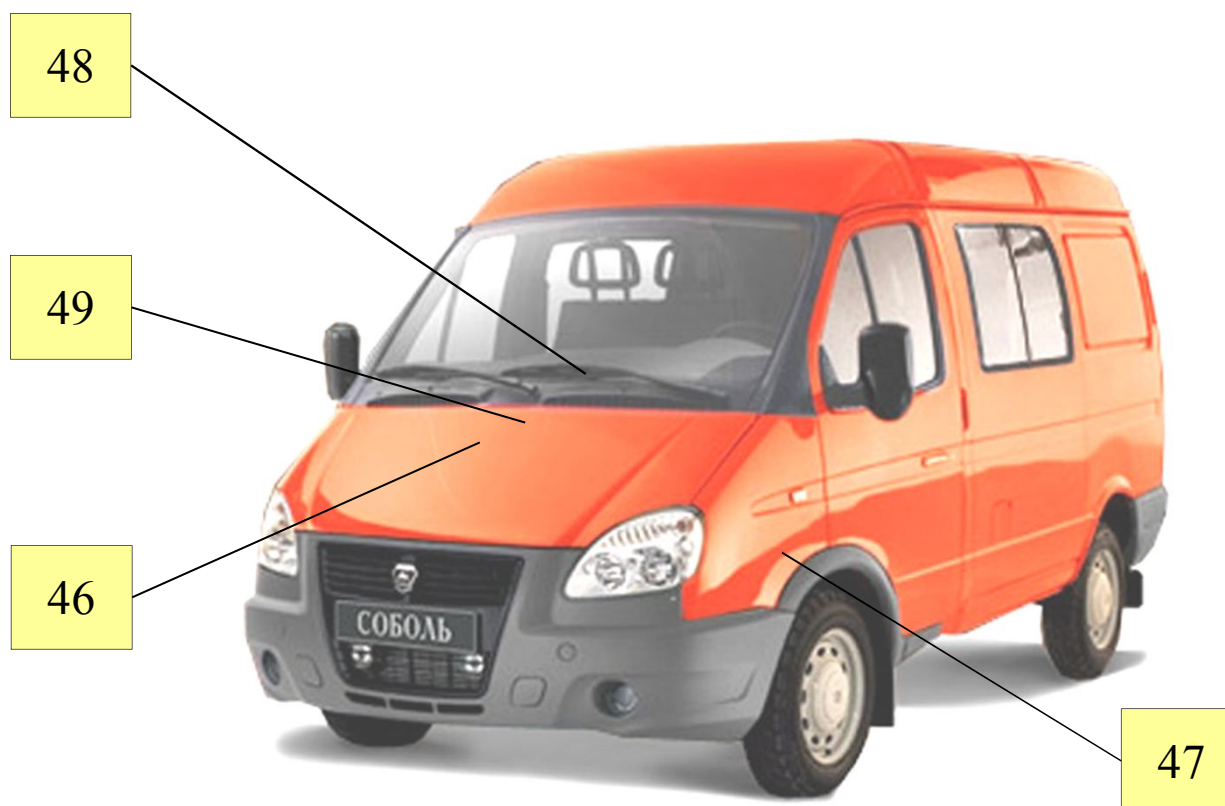
Recommended dismantling:

Interior - polymers



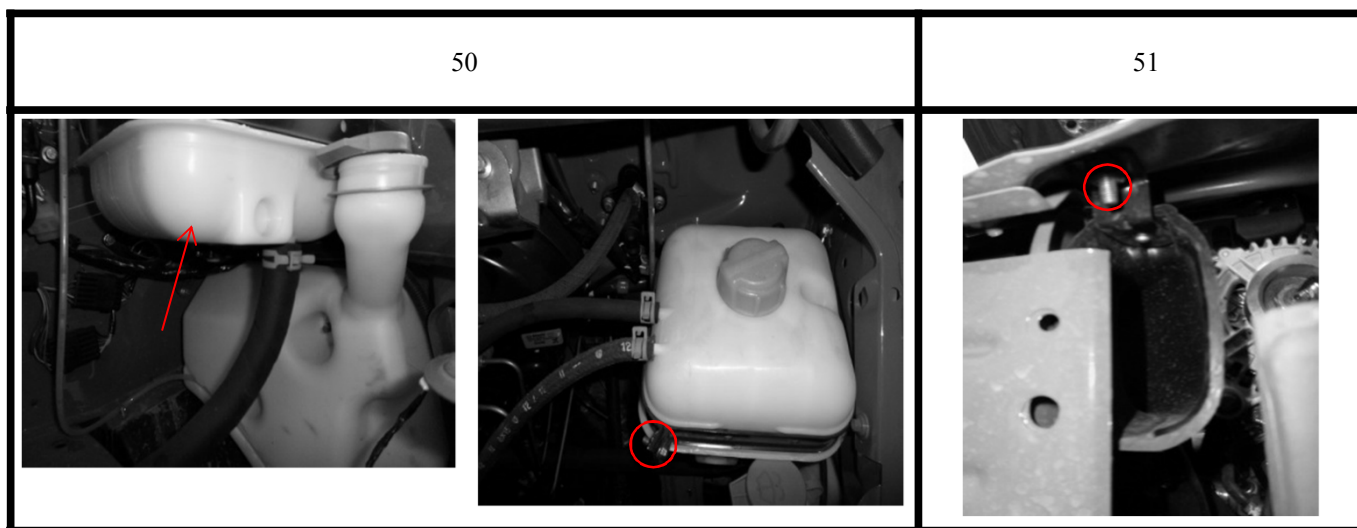
№	Name of the component	Amount, amt.	Weight, g	Removal time	Component's fasteners	Marking component	Tools	Method of dismantling
46	Left bottom sidewall facing	1	336	4 min	Screw - 2 pcs. Bolt 8 - 2pcs.	PP-TD20	- Removable head 8 - Phillips screwdriver	- Loosen the fastening - Remove
47	Right bottom sidewall facing	1	336	10 sec	Screw - 2 pcs. Rivets - 2 pcs.	PP-TD20	- Flat-blade screwdriver - Phillips screwdriver	- Loosen the fastening - Remove
48	Upper facing (passenger seat)	3	240	1 min	Screw - 3 pcs.	ABS	- Phillips screwdriver	- Loosen the fastening - Remove
49	Double seat padding	3	2670	1 min		PUR	- Knife	- Cut the trim - Remove the padding

Recommended dismantling: Interior - polymers



Recommended dismantling:

Hood space - polymers



№	Name of the component	Amount, amt.	Weight, g	Removal time	Component's fasteners	Marking component	Tools	Method of dismantling
50	Expansion tank (coolant system)	1	720	2 min 30 sec	Bolt 8 - 1 pc. Clamp - 3 pcs.	PP/PE	- Pliers - Removable head 8	- Disconnect hoses - Loosen the fastening - Remove
51	Air intake with bracket	1	450	30 sec	Screw - 1 pc.	PP	- Phillips screwdriver	- Loosen the fastening - Remove

Recommended dismantling: Hood space - polymers

